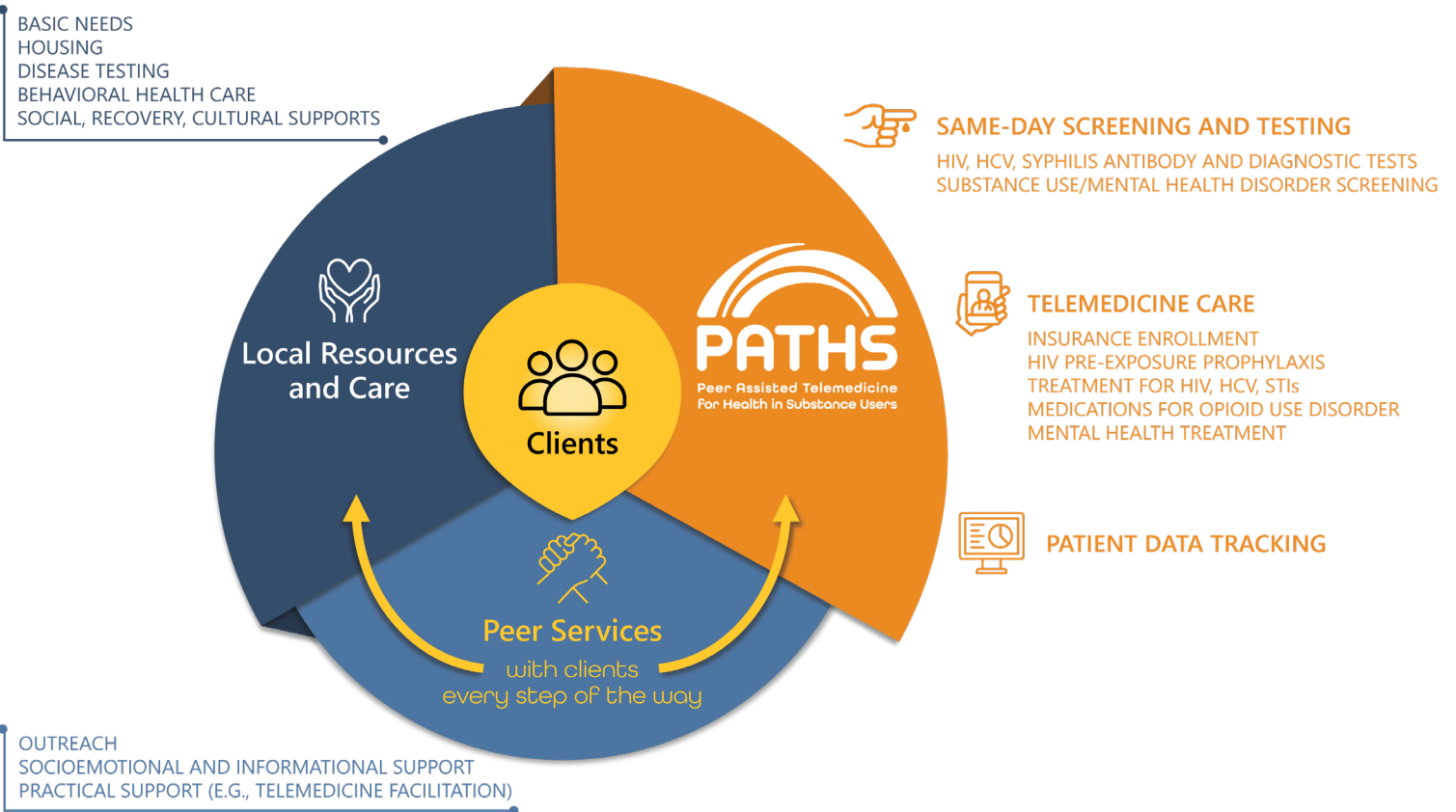




OREGON PATHS



PATHS is an intervention developed by Oregon Health & Science University (OHSU) in collaboration with partners. Peer support specialists with lived experience assist people who use drugs to access **telemedicine for hepatitis C (HCV) and HIV treatment and prevention, substance use disorder treatment, and mental health care.** OHSU clinicians provide **streamlined, low-barrier access to care.**



Reduced Delays

- Streamlined lab orders designed to minimize participant burden
- Same-day unscheduled telemedicine clinician visits ("walk-ins")



Reduced Barriers

- Peers facilitate telemedicine visits, including bringing technology to participants
- Medication lockers if participant does not have stable housing



Peer Support

- Assistance with medication reminders, pickup, and adherence
- Calling, texting, and going out to locate participants to maintain contact
- Assistance with daily life needs, resources, and prevention tools

STUDY RESULTS

The initial HCV-focused PATHS model was tested in a National Institutes of Health-funded randomized controlled trial ($N = 203$). **The peer TeleHCV model demonstrated significantly greater impact on HCV treatment initiation and cure than the community referral approach.**

Participants started HCV meds within 6 months



Participants cleared HCV



“ [My peer] always found me one way or another. If she couldn't reach me by phone, she would come to my [parents'] house. No matter what it took for her to track me down, she always did. She didn't just stop at one spot because she wasn't able to get a hold of me. **She never gave up.**”

PATHS EXPANSION

Based on positive early study findings, OHA funded dissemination of the model. **From 2021 through 2025 PATHS engaged over 1,200 patients in testing and initiated HCV treatment for 265 patients.** PATHS partners with existing PRIME+ peer teams and other community-based programs around the state to connect people who use drugs to services. The OHSU PATHS implementation team provides training, technical assistance, and clinical coordination. The Substance Abuse and Mental Health Services Administration supports protected clinician time, access to same-day HCV diagnostics, and centralized care coordination.

Through a 2025–2028 SAMHSA grant PATHS will implement same-day testing in 6 demonstration sites around the state and add same-day telemedicine for HIV, opioid use disorder medication, and mental health treatment, followed by bridge to local ongoing care.

peerpathstohealth.org

Scan the QR code with your smartphone camera to go to our website to **learn more and find a PATHS team in your area**



pathsprogram@ohsu.edu

Funded through OHA's SAMHSA State Opioid Response Grant #H79TI085732 and OHSU's SAMHSA Hepatitis C Elimination Initiative Pilot Grant #H79TI088366